

# ◆ The Thoroughfare ◆

Volume 4, Issue 1

Spring 1996

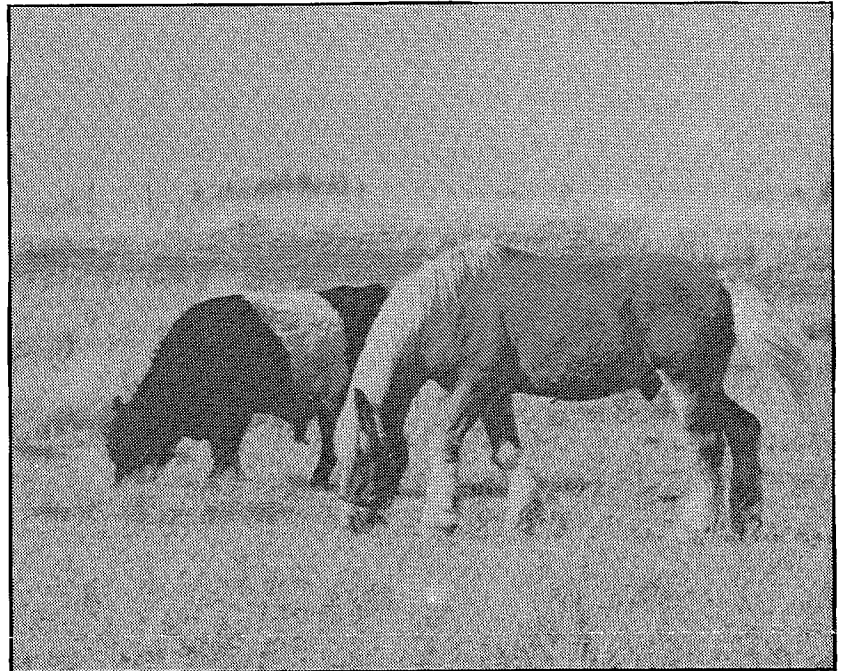
## CHAIRMAN'S NOTES

### *Opening Remarks at the Spring Meeting*

**W**e ought to remind ourselves from time to time of the corporate nature of our membership. It is not enough merely to think of that form of legal incorporation which enables the business of Roque Island to get done. The Roque Island Gardner Homestead Corporation also provides the framework which knits all of us together into something greater than an extended family - into a corporate body of members with equal rights and benefits, with a shared past, present and future, and with a common interest in preserving a property for the advantage and enjoyment of the next generation. Each of our children will receive the same benefits from the individual contributions to Roque Island of all members. The intellectual and life experience resources of our membership, as with any corporation, are a common fund for the family not just on Roque Island but in other parts of our lives. Our experience with that corporate bond as the family grows in size, is serendipitous.

Economic survival skills have to be relearned if they are not shared and passed on. Family networks have been invaluable sources of economic lore about techniques for advancement, mistakes to avoid, opportunities to seize. There will always be some more commercially able family members who transmit economic advantages to the entire network.

*Continued on page 4*



*Barney and a beltie*

## FLOTSAM



Brianna Marie Cirone was born on December 15, 1995 to Steve Cirone and Barbie Bubar.



A new fiberglass, Herreshoff 12 1/2 has been purchased by the Island: *Sandpeep II*. The wooden *Sandpeep* has been sold to the Fischer family who plans to restore it and keep it in Port Clyde, Maine. (Please note that the *Sandpeep II* is to be treated with extreme care and use of it should be limited to those who are experienced sailors.

The *Loon*, a 22' Sisu outboard with cabin, has also been purchased for general Island use.



There is an inter-tidal zone study taking place on Roque this summer. Sara Faull, Genio Bertin, and Sarah Lancaster of the College of the Atlantic will be conducting the study and may be seen on the Island from time to time. John Brokaw and Mary Burk will be working with Norm Famous this summer on the Flora and Fauna inventory and may be seen on the Island from time to time. (John is George Herrick's step-son.)

## NEWLY REVISED POLICY BOOK

The Roque Island Policy Book has recently been edited. The Policy Book has been designed to protect both the Island and its visitors (family and guests alike). It is very important that we are aware of these guidelines in order to ensure everyone's enjoyment of the Island. A few of the new/edited policies that are of great importance are listed below. [The edited Policy Book will be sent to everyone next month.]

### HOUSE CLEANING

It is assumed that each house will be left clean and in an orderly manner after each Island visit (e.g.: beds stripped; dishes washed and put away; games etc. put away; all floors swept/vacuumed; extra food disposed of; and the house left in general good order. If any of the houses are in need of excessive cleaning, an hourly charge will be applied.

### RED HOUSE PER DIEMS

Off season (after Columbus Day through Memorial Day) is a flat rate of \$50. High season (after Memorial Day through Columbus Day) is \$75/day for a couple and \$100/day for 3 or more.

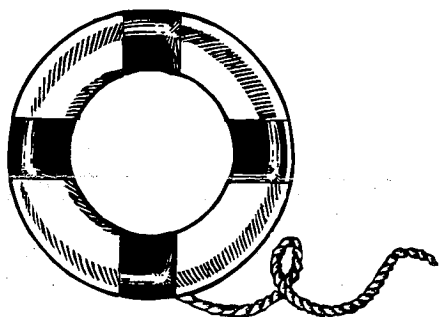
### IMPROVEMENTS & REPAIRS

Remember to pass on suggestions for improvements to the Rusticators Committee (Nina Herrick, Chair). Notify Staff only of immediate repairs, otherwise please notify the Operations Committee (Tanya Fischer, Chair).

### FIRE SAFETY

Please BE EXTRA CAUTIOUS. Determine the location of fire extinguishers and fire ladder when settling into the house.

Check to see that smoke detectors are operating. Ash the Staff about fire drills and other emergency procedures. Please DO NOT LIGHT FIRES in the stove(s), fireplaces, or furnace if you are not well practiced at doing so - the Staff is available to show you how to light and maintain fires. Please be aware that our only protection against fire is PREVENTION. *Each household should place outside in the case of a fire (i.e.: Red House - fire box in front; Gardner & Monks House - croquet court; and the Farmhouse - in the farmyard at the gate to the barn).*



### RECYCLING

We are in the process of actively downsizing the dump and managing our trash. Please be aware of current efforts that are underway and help to facilitate them. Ask Barbie if you have any questions.

### USE OF BOATS

*In general, please use common sense.* Competency for use of the Buzz Boat, the Loon, and the Sandpeep II must be passed on by the Boatman or General Manager. The Jos. Peabody is typically for Island operations use only. Anyone taking out a boat should be proficient in its use. If in doubt, please ask the Boatman to advise the user. For safety reasons, the Boatman or other Staff should be informed of intended destination

and expected length of time on the water.

### MINORS' USE OF VEHICLES

Teenagers must have parental permission and adult supervision is required for those without a license. If irresponsible behavior occurs with regard to the vehicles the Island Staff may revoke one's right of use.

### SPEED LIMIT

Please do not drive more than 15 mph anywhere on the Island

### USE OF MOUNTAIN BIKES

Please walk your bike around moss on trails.

### DOGS

*All dogs must be in the presence of their owners at all times.* Please do not let them run loose, especially in the farm yard. Owners (and host members) will be responsible for any unusual damage that occurs as a result of their dog's actions. Squire's Point is off-bounds to dogs from May through to October because of the resident shorebird population.

### THE GARDEN

The garden is subsidized by members of Tier III and non-Tier III members will be charged for produce. Please see Island Staff before removing anything from the garden. Staff will gather all produce on the Island for you and your guests.

### MEMBERS' AND GUESTS' RESPONSIBILITY

*It is the general policy that host members will be held responsible for any unusual damage done by anyone in their household to the boats, animals, vehicles, houses, and land.*



## SQUIRE'S POINT

Living historical farms offer farming and rural life as a valid subject matter representative of a certain time and place.

The Association of Living Historical Farm (ALFAM) in Santa Fe, New Mexico was founded in 1979. There are 100 such farms in the U.S. today and another 500 "call themselves" one. All of them represent farming prior to 1920 although there is a case to be made for preserving a World War II farm. Although the accreditation criteria are beyond Roque Island's situation, it may nevertheless be useful to be aware of the criteria as a guide for maintaining a traditional Maine island farm.

Generally, a living historical farm relates to a specific historical time and place, cares for documents and collections as tangible and intangible resources and uses preserved or reconstructed environments and experimental activities as key interpretative devices. An historical farm is organized as a non-profit institution for essentially educational purposes.

Collections should represent significant natural environmental, technological, economic and/or social realities and interrelationships within a well-defined framework of period or subject matter. They should include appropriate artifacts or reproductions, processes and documentation of pertinent traditions, processes and hand skills.

Research should be planned and pursued as an ongoing institutional program, providing for accurate and timely documentation of collections. It should generate data needed to support historically valid interpretive programs and contribute to understanding of agricultural, social, economic and technological history, cultural geography and other disciplines.

Making an inventory of existing plant and surviving records would be a first step toward establishing a preservation program. Setting a plan, with appropriate priorities, for future preservation would follow. What are the key elements, customs or skills we should seek to maintain?

## NEWS FROM ROQUE

Is winter ever going to end? Spring seems to tease us for a few days and then reverts back to winter weather.

The houses are in the process of being spruced up for the summer season. They all seem to make it through the winter rather well.

Seeds have been started in the greenhouse and are anticipating the big trip to the garden area. (Corn was started and is already a foot tall, maybe I should have waited a few more weeks!)

The "vista" has been cleared and the apple trees in the orchard have been pruned. All of the trees and shrubs that were planted last year have little buds on them.

All of the sheep have had their babies, we believe the final count is thirty-one. It was hard to keep track, they were having them left and right.

Also new in the barnyard, a son born to Matilda, the milk cow, on April 4th. It looks like a Belted Galloway only it has a wider belt and we think it will be a brownish color. Alhambra "Mum

cow" also had a baby boy. He was born the 17th of April. He is another pure Beltie for Roque.

We did have an unfortunate occurrence in the barnyard the winter. Barney took a spill in January. He was taken into the barn, warmed and dried. He has been up



Brianna

and down ever since, sometimes in a sling to keep him standing. The veterinarian came to check him. All of the wounds he had incurred were superficial. However, his arthritis had worsened in the joints of his legs, making it very painful for him to stand. Although valiant efforts were made to make him well again, we are very upset and sadly regret that he had to be put down Sunday, April 28th. In closing, it has been an extremely cold winter and spring on Roque. We look forward to seeing all of you, however we do have a big request: PLEASE BRING THE WARM WEATHER WITH YOU!!

- Barbie Bubar and Steve Cirone



CHAIRMAN'S COMMENTS, *continued from page 1*

Equally, there are countless exchanges of benefits without financial value - advice, wisdom and instruction; valuable introductions, caring support and an internet of information, to name a few - that have a multiplying effect for being shared widely.

Families with an effective and intelligent economic and membership tradition are more equal than others. They begin at a different "starting line." As Michael Novak wrote in *Democratic Capitalism*, "It is in the interests of a healthy and dynamic society, of course, to upgrade the economic traditions of every family for the sake of every individual. (Every) single family network that becomes a center of intelligent economic activity and a repository of hard-won economic habits is an immeasurable resource for the nation of which it is part."

There are many fine examples in our family of members working together, exchanging ideas and information, encouraging each other to reach higher. Could this have happened in such a large family without the corporate body of Roque Island?

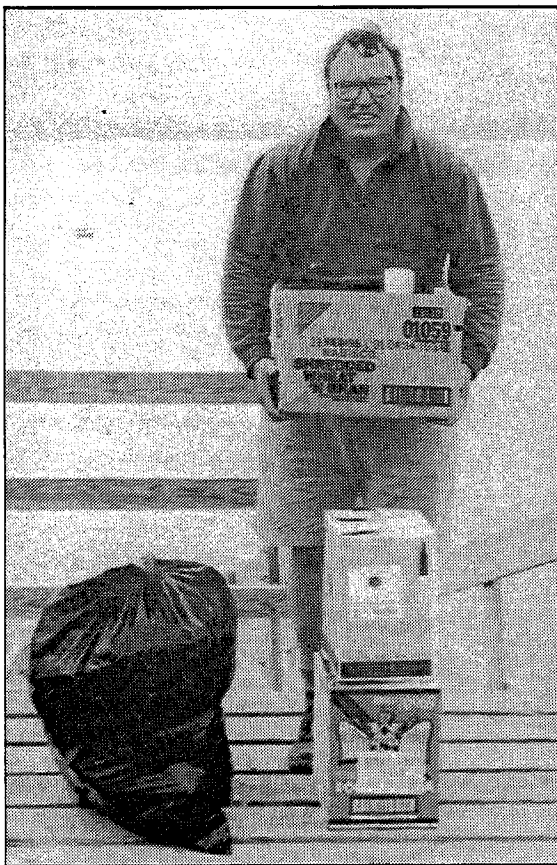
The survival into the future of Roque Island is more than an economic affair. We must serve our community that it can serve us better. We have an opportunity to take a leadership role in our community that can give us greater control over our destiny and ensure that we remain credible as an organizational entity. We need an effective family corporate network to do it.

- G.G. Herrick

The next issue of *The Thoroughfare* will come out at the of the summer:

Send photos, written pieces, little tidbits of information... anything and everything!

Ari Fischer  
P.O. Box 1225  
Rockland, Maine 04841  
(Tel) 207.372.6760  
(Fax) 207.372.8551  
(E-Mail) arijam@midcoast.com



The Thoroughfare  
P.O. Box 1225  
Rockland, Maine 04841

To:

Mrs. Tatiana C. P. Fischer  
Horse Point Road  
Port Clyde, ME 04855

*An option for trash management? - George Herrick taking his trash and recyclables off-island with him.*

